

Maurice – ProteinSimple

cIEF & CE-SDS

INTRODUCTION

The Lumetics LINK™ software platform scans network locations for new measurement data files, copies data directly to a centralized database, and provides a powerful user interface for rapid multi-measurement multi-technique data aggregation, visualization, analysis, and reporting. LINK employs a client/server-based architecture where the LINK server hardware is provided by the end user and resides on the end user’s network. The LINK client is a portable web-based application that may be placed on any computer with network connectivity to the LINK server. For successful import, the LINK webserver requires read access to the folders where user data resides.

Maurice innovates the conventional capillary electrophoresis technology to automate protein profiling either by size or charge. iCE™ platforms give you reproducible, quantitative analysis of identity, purity, and heterogeneity profiles for your therapeutic proteins. Maurice platforms also automate size separations for you, so you'll get robust and quantitative analysis for your monoclonal antibodies too.

DETAILS

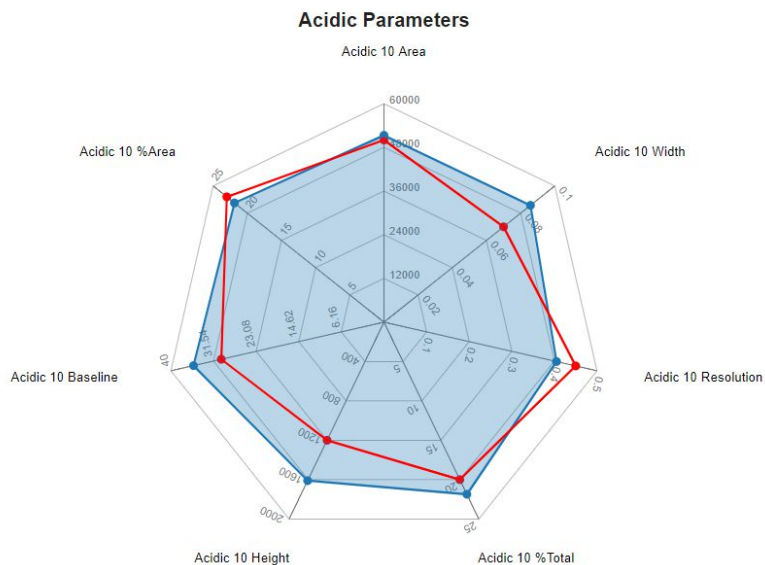
LINK requires the PDF reports for importing Maurice data.

All available instrument/analysis settings and parameters will be imported automatically. LINK does not currently import raw curve data from Maurice PDFs. Only the summary data from the PDF tables is imported.

EXAMPLES

Included below are example dashboards from Maurice measurement files:

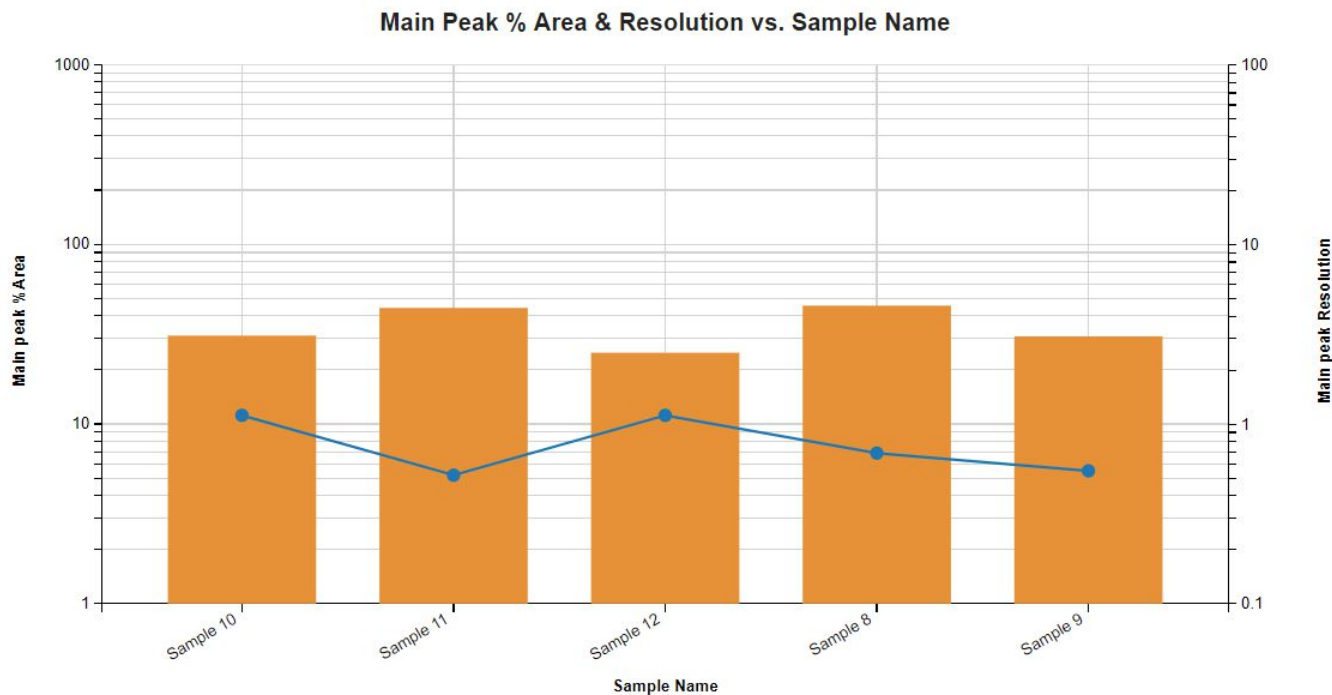
1. Radar Chart representing multiple acidic 10 parameters



Maurice, Total Population



2. Column chart exemplifying Main Peak parameters



3. Tabular Summary examples

Measurement Summary Table – Instrument Settings

LINK Record ID #	Sample Name	Analysis Date	Cartridge Type	Run Completed	Run Started	Tray Temperature	Sample Load Duration
17	Sample 8	2017-02-22 15:32:00	ciEF	Wed 8:32 PM Feb 22, 2017 GMT	Wed 4:15 PM Feb 22, 2017 GMT	4°C	55.0 Seconds
18	Sample 9	2017-02-22 15:32:00	ciEF	Wed 8:32 PM Feb 22, 2017 GMT	Wed 4:15 PM Feb 22, 2017 GMT	4°C	55.0 Seconds
19	Sample 10	2017-02-22 15:32:00	ciEF	Wed 8:32 PM Feb 22, 2017 GMT	Wed 4:15 PM Feb 22, 2017 GMT	4°C	55.0 Seconds
20	Sample 11	2017-02-22 15:32:00	ciEF	Wed 8:32 PM Feb 22, 2017 GMT	Wed 4:15 PM Feb 22, 2017 GMT	4°C	55.0 Seconds
21	Sample 12	2017-02-22 15:32:00	ciEF	Wed 8:32 PM Feb 22, 2017 GMT	Wed 4:15 PM Feb 22, 2017 GMT	4°C	55.0 Seconds

Measurement Summary Table – Measurement Results

LINK Record ID #	Sample Name	Main peak %Total - AVG	Main peak %Area - AVG	Main peak Resolution - AVG	Main peak Baseline - AVG	Main peak Width - AVG	Main peak pI - AVG	Main peak Position - AVG
17	Sample 8	45.50	45.50	0.69	17.50	0.11	8.37	1320
18	Sample 9	30.70	30.70	0.55	-42.90	0.08	8.37	1334
19	Sample 10	31.00	31.00	1.12	-54.70	0.08	8.37	1328
20	Sample 11	44.00	44.20	0.52	27.30	0.11	8.36	1317
21	Sample 12	24.90	24.90	1.12	-25.50	0.07	8.36	1320

DASHBOARD DOWNLOADS

Included below are the links to downloadable sample dashboards for Maurice measurement files:

<http://lumetics.com/dashboards/Maurice/Maurice.zip>



CONTACT LUMETICS

For direct assistance, please contact Lumetics LINK™ Support:

E-mail: support@lumetics.com

Phone: 1.613.614.874

Website: <http://lumetics.com/>