

## ASTRA SEC-MALS – Wyatt Technology

### INTRODUCTION

The Lumetics LINK™ software platform scans network locations for new measurement data files, copies data directly to a centralized database, and provides a powerful user interface for rapid multi-measurement multi-technique data aggregation, visualization, analysis, and reporting. LINK employs a client/server-based architecture where the LINK server hardware is provided by the end user and resides on the end user's network. The LINK client is a portable web-based application that may be placed on any computer with network connectivity to the LINK server. For successful import, the LINK webserver requires read access to the folders where user data resides.

ASTRA SEC-MALS is a luminary software for macromolecular and nanoparticle separation and characterization. The most powerful and versatile software available for the characterization of macromolecules and nanoparticles via multi-angle and dynamic light scattering.

### DETAILS

LINK requires the XML (typically **report.xml**). The raw curve data CSV files are optional. Data files must be exported from the instrument software.

The following raw curve data may be imported, in addition to all available instrument/analysis settings and parameters calculated by the instrument software:

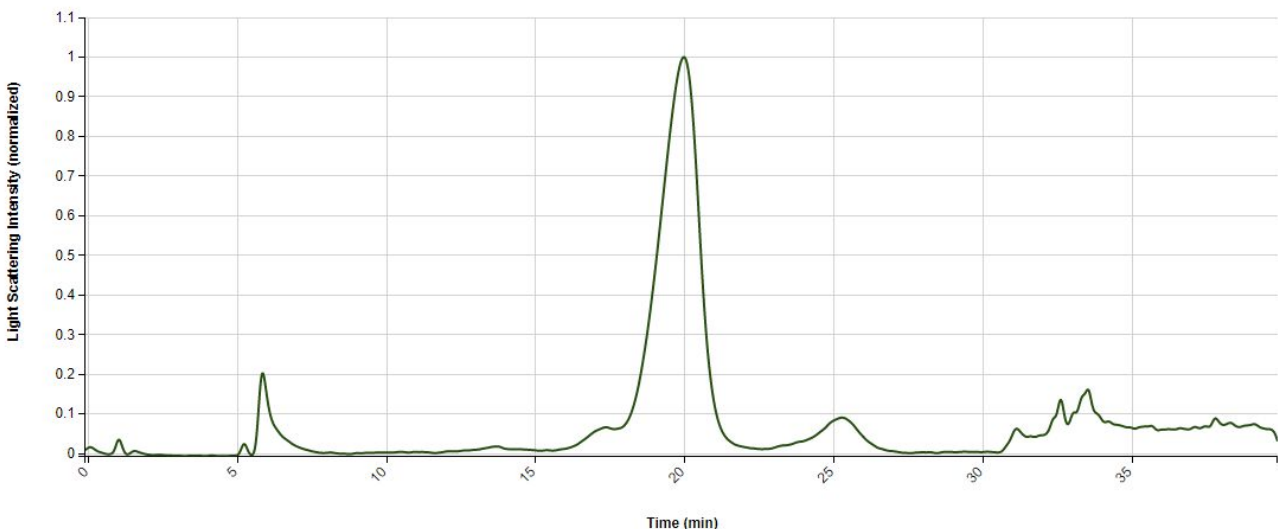
- Differential Refractive Index (RIU) vs. Time (min)
- Light Scattering Intensity (normalized) vs. Particle Size
- UV Absorbance vs. Time

### EXAMPLES

Included below are sample dashboards from ASTRA measurement files:

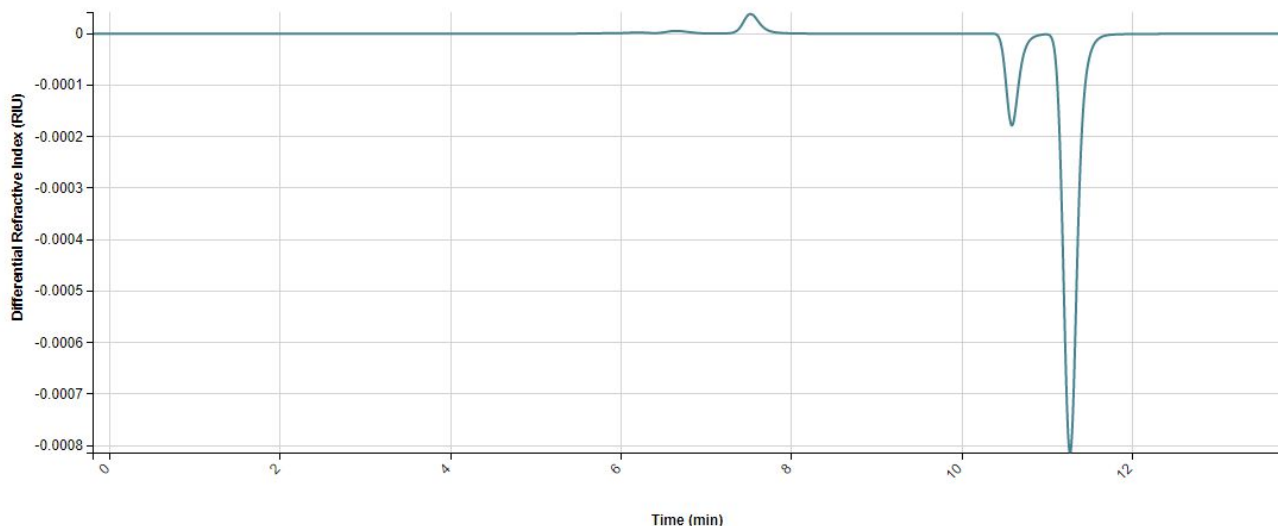
1. Line Chart plotting raw data curves for Light Scattering Intensity vs. Time

Light Scattering Intensity vs. Time



## 2. Line Chart plotting raw data curves for Differential RI vs. Time

Differential Refractive Index vs. Time



## 3. Tabular Summary examples

### Measurement Summary Table – Measurement Results

Sample Name	HMWS 1 Retention Time (min) - AVG	HMWS 1 M(avg) (g/mol) - AVG	HMWS 1 Mw (g/mol) - AVG	HMWS 1 Mp (g/mol) - AVG	HMWS 1 Mn (g/mol) - AVG	HMWS 1 Average concentration (mg/mL) - AVG	HMWS 1 Calculated Mass (µg) - AVG	HMWS 1 Mass Recovery (%) - AVG	HMWS 1 Mass Fraction (%) - AVG	Light Scattering Intensity (normalized) (Time (min) >=1) - AVG	Differential Refractive Index (RIU) (Time (min) >=1) - AVG	Monomer Calculated Mass (µg) - AVG	Total Standard Deviation (min) - AVG
LINK1	25.24	309564.31	650346.74	300622.63	384206.83	1.03e-4	0.47	4.73	4.54	331.13	0.00	8.38	5.32
LINK2										0.00	-0.02		

### Measurement Summary Table – Instrument Settings

LINK Record ID #	InstrumentName	Sample Name	Total Skew - AVG	Total Tailing Factor - AVG	Total End (min) - AVG	Experiment	Directory	Collection Version	Collection Time
3	ASTRA	LINK1	-55.17	3.52	30	126_2019-02-0...	C:\Raw data\042...		Tuesday, Februa...
4	ASTRA	LINK2				raw data	D:\171116 - mer...	6.1.2.84	Thursday Nove...

## DASHBOARD DOWNLOAD

Included below is a link to downloadable dashboards for ASTRA measurement files:

<http://lumetics.com/dashboards/ASTRA/ASTRA.zip>

## CONTACT LUMETICS

For direct assistance, please contact Lumetics LINK™ Support:

E-mail: [support@lumetics.com](mailto:support@lumetics.com)

Phone: 1.613.614.874

Website: <http://lumetics.com/>

