

Uncle – Unchained Labs

INTRODUCTION

The Lumetics LINK™ software platform scans network locations for new measurement data files, copies data directly to a centralized database, and provides a powerful user interface for rapid multi-measurement multi-technique data aggregation, visualization, analysis, and reporting. LINK employs a client/server-based architecture where the LINK server hardware is provided by the end user and resides on the end user's network. The LINK client is a portable web-based application that may be placed on any computer with network connectivity to the LINK server. For successful import, the LINK webserver requires read access to the folders where user data resides.

UNcle is a one-stop protein stability platform that uses fluorescence, SLS and DLS detection to enable 12 different applications. Multiple measurements such as thermal melting, aggregation, and sizing can be performed with the same samples in just one experiment.

DETAILS

LINK requires the XLSX data file to import UNcle results. The required data file must be exported from the UNcle software. The "mass" or "intensity" need to be included in the file name after the "uni_" to be imported into LINK.

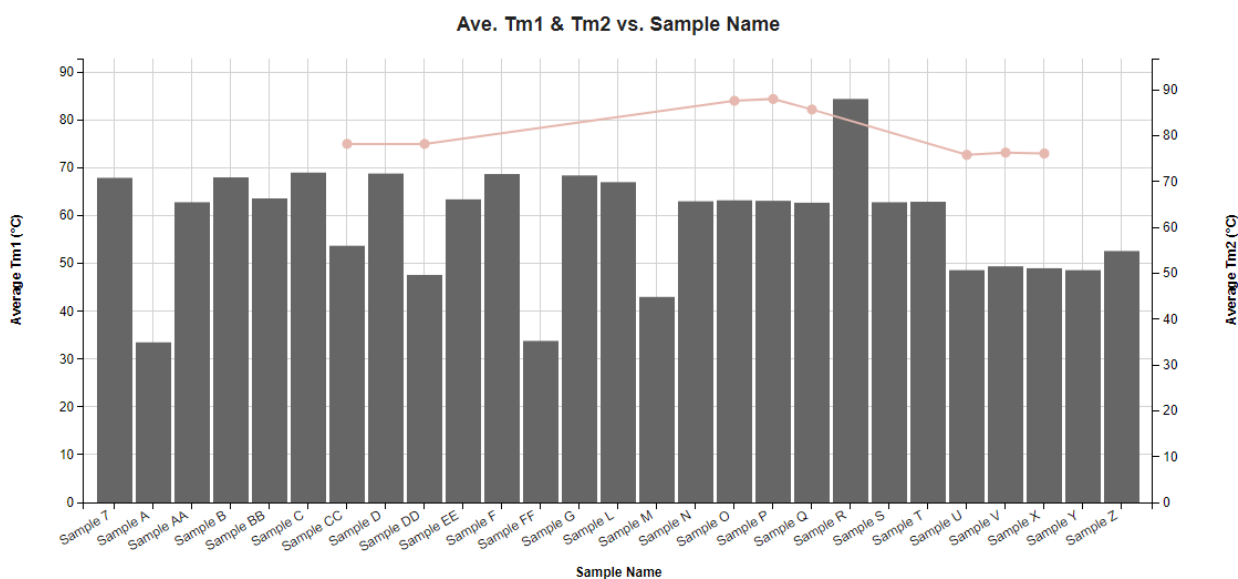
The following raw curve data may be imported, in addition to all available instrument/analysis settings and parameters calculated by the instrument software:

- Delay Time vs. Autocorrelation Function
- Particle Diameter vs. Intensity %
- Particle Diameter vs. Mass %
- Temperature vs. BCM/nm
- Temperature vs. SLS 266nm/Count
- Temperature vs. SLS 473nm/Count

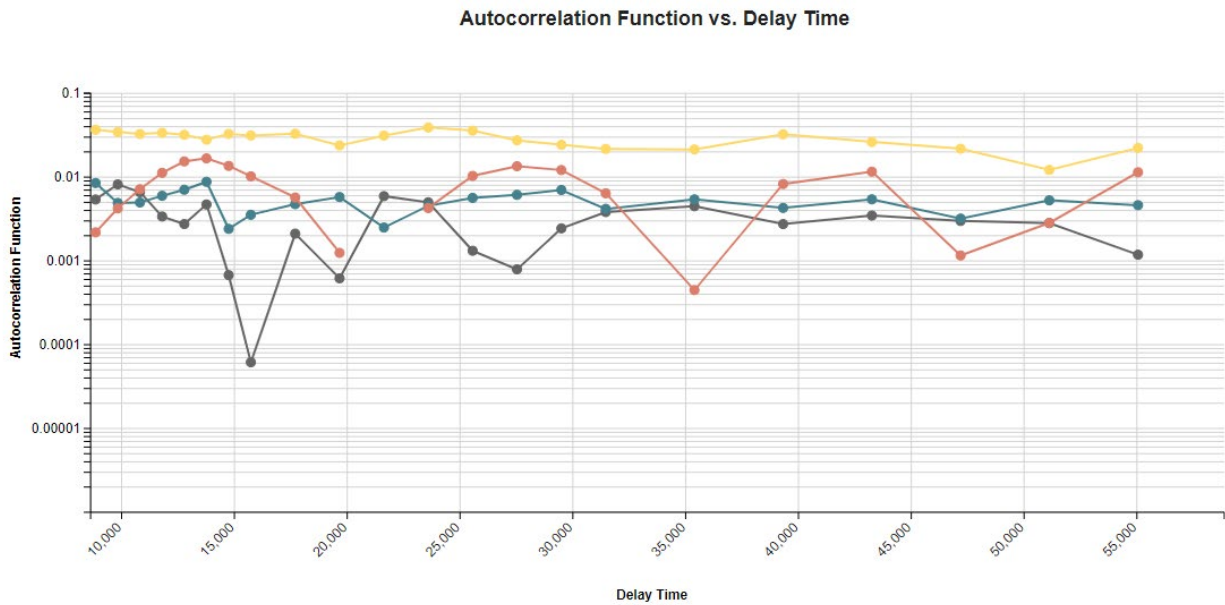
EXAMPLES

Included below is a sample dashboard from UNcle measurement files:

1. Column Chart plotting measurement results for Average Tm1 & Tm2 vs. Sample Name



2. Line Chart plotting raw data measurement results for Autocorrelation Function vs. Delay Time



3. Tabular Summary examples

Measurement Summary Table – Measurement Results

Sample Name	Well	Tm1 (°C) - AVG	Average Tm1 (°C) - AVG	%CV Tm1 - AVG	%CV Tagg473 - AVG	%CV Tagg266 - AVG
Sample 7	J1	67.90	67.90			
Sample A	A1	33.50	33.50		26.13	25.49
Sample AA	Multiple (3 Values)	62.80	62.80	0.48	0.26	0.13
Sample B	Multiple (2 Values)	68.00	68.00	1.18		10.98
Sample BB	Multiple (3 Values)	63.60	63.60	1.42	0.13	0.40
Sample C	Multiple (2 Values)	69.00	69.00			30.00
Sample CC	Multiple (3 Values)	53.70	53.70	15.83	0.68	1.10
Sample D	F1	68.80	68.80			
Sample DD	Multiple (2 Values)	47.55	47.60	0.63	0.14	0.28
Sample EE	Multiple (2 Values)	63.45	63.40	0.32	0.69	0.97
Sample F	G1	68.70	68.70			
Sample FF	Multiple (2 Values)		33.80		19.68	28.41

Measurement Summary Table – Instrument Settings

Sample Name	LINK Record ID #	InstrumentName	File Name	Well Row - AVG	Well Column - AVG	Well
Sample 7	106	UNCle	UNCLE Report	10.00	1.00	J1
Sample A	97	UNCle	UNCLE Report	1.00	1.00	A1
Sample AA		UNCle	UNCLE Report	3.00	3.00	Multiple (3 Values)
Sample B		UNCle	UNCLE Report	2.50	1.00	Multiple (2 Values)
Sample BB		UNCle	UNCLE Report	6.00	3.00	Multiple (3 Values)
Sample C		UNCle	UNCLE Report	4.50	1.00	Multiple (2 Values)
Sample CC		UNCle	UNCLE Report	9.00	3.00	Multiple (3 Values)
Sample D	102	UNCle	UNCLE Report	6.00	1.00	F1
Sample DD		UNCle	UNCLE Report	11.50	3.00	Multiple (2 Values)
Sample EE		UNCle	UNCLE Report	13.50	3.00	Multiple (2 Values)
Sample F	103	UNCle	UNCLE Report	7.00	1.00	G1
Sample FF		UNCle	UNCLE Report	15.50	3.00	Multiple (2 Values)
Sample G	104	UNCle	UNCLE Report	8.00	1.00	H1
Sample L	110	UNCle	UNCLE Report	14.00	1.00	N1

DASHBOARD DOWNLOAD

Included below is a link to downloadable dashboards for Uncle measurement files:

<http://lumetics.com/dashboards/Uncle/Uncle.zip>

CONTACT LUMETICS

For direct assistance, please contact Lumetics LINK™ Support:

E-mail: support@lumetics.com

Phone: 1.613.614.874

Website: <http://lumetics.com/>

