

Maurice – ProteinSimple

cIEF & CE-SDS

INTRODUCTION

The Lumetics LINK™ software platform scans network locations for new measurement data files, copies data directly to a centralized database, and provides a powerful user interface for rapid multi-measurement multi-technique data aggregation, visualization, analysis, and reporting. LINK employs a client/server-based architecture where the LINK server hardware is provided by the end user and resides on the end user’s network. The LINK client is a portable web-based application that may be placed on any computer with network connectivity to the LINK server. For successful import, the LINK webserver requires read access to the folders where user data resides.

Maurice innovates the conventional capillary electrophoresis technology to automate protein profiling either by size or charge. iCE™ platforms give you reproducible, quantitative analysis of identity, purity, and heterogeneity profiles for your therapeutic proteins. Maurice platforms also automate size separations for you, so you'll get robust and quantitative analysis for your monoclonal antibodies too.

DETAILS

LINK can import data from the peaks.txt file (with an option PDF report attachment accessible from within the LINK software), or from the PDF reports alone.

Helpful Notes:

- If importing from the peaks.txt file, LINK will automatically detect and calculate peak parameters for Main Peak, Acidic Species, Basic Species. LINK will also automatically calculate Number of Peaks.
- When calculating Acidic Species and Basic Peak parameters, where multiple peaks are present in each, the Area, % Total, and % Area will be summed. All other peak parameters will be averaged.

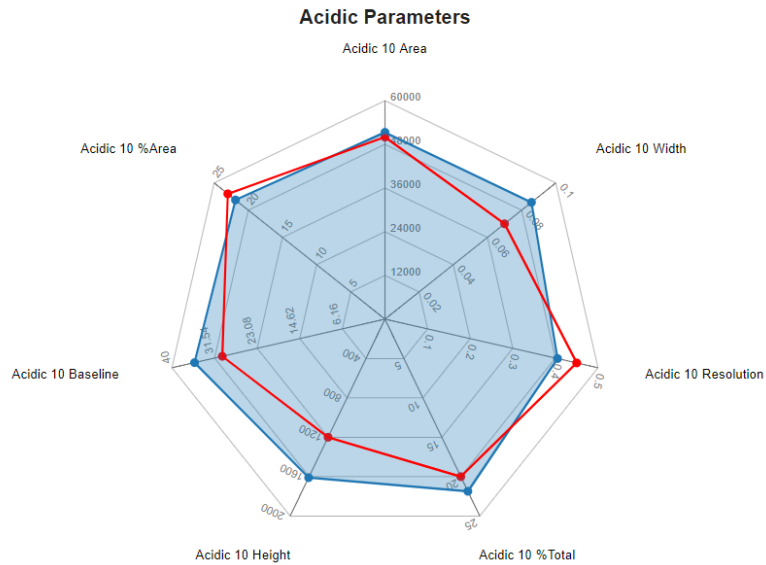
The Maurice TXT data file example is as follows:

	Injection	Injection Name	Sample	Location	Method	Peak	Name	Position	pI	Height	Area	%Total	%Area	Width	S/N	Baseline	Resolution
2	1	SS Sample A	B1	System Suitability	1	Mkr	3.38	327.1	3.38	8398.72	104675.991	0.0567	377.9	212.65			
3	1	SS Sample A	B1	System Suitability	2		862.1	5.968	8612.35	99788.4	25.94	0.0527	387.5	87.22	27.88		
4	1	SS Sample A	B1	System Suitability	3		924.8	6.271	12637.78	180957.464	47.04	0.0651	568.7	78.21	3.03		
5	1	SS Sample A	B1	System Suitability	4		1696.8	10.008	12724.55	103927.299	27.02	0.0371	572.6	72.06	43.03		
6	1	SS Sample A	B1	System Suitability	5	Mkr	10.17	1730.3	10.17	12149.25	108592.432		0.0406	546.7	73.24	2.45	
7	2	Blank	Blank	C1 method 1	1	Mkr	6.14	381.3	6.14	609.87	19392.041		0.0655	29	32.89		
8	2	Blank	Blank	C1 method 1	2	Mkr	9.50	1911.2	9.5	1207.07	11825.666		0.0202	57.3	31.37	46.1	
9	3	Sample B	Sample B	D1 method 1	1	Mkr	6.14	405.5	6.14	696.79	10503.612		0.031	29.6	77.75		
10	3	Sample B	Sample B	D1 method 1	2		1013.2	7.466	219.52	2626.817	1.2	0.0246	9.3	103.56	28.17		

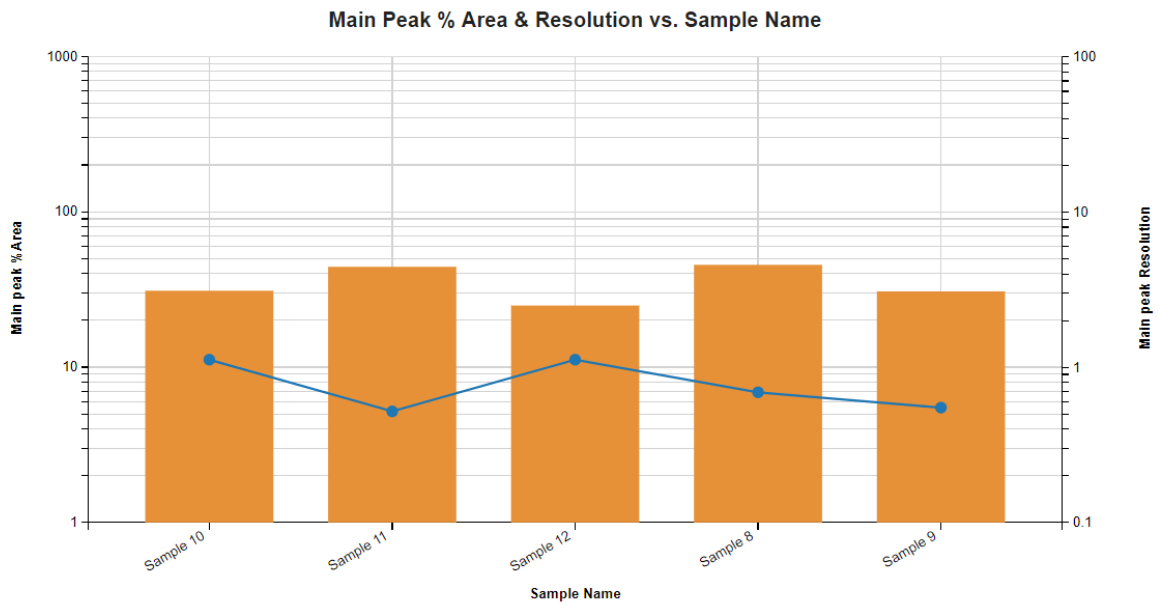
EXAMPLES

Included below are example dashboards from Maurice measurement files:

1. Radar Chart representing multiple acidic 10 parameters



2. Column chart exemplifying Main Peak parameters



3. Tabular Summary examples

Measurement Summary Table – Instrument Settings

LINK Record ID #	Sample Name	Analysis Date	Cartridge Type	Run Completed	Run Started	Tray Temperature	Sample Load Duration
17	Sample 8	2017-02-22 15:32:00	ciEF	Wed 8:32 PM Feb 22, 2017 GMT	Wed 4:15 PM Feb 22, 2017 GMT	4°C	55.0 Seconds
18	Sample 9	2017-02-22 15:32:00	ciEF	Wed 8:32 PM Feb 22, 2017 GMT	Wed 4:15 PM Feb 22, 2017 GMT	4°C	55.0 Seconds
19	Sample 10	2017-02-22 15:32:00	ciEF	Wed 8:32 PM Feb 22, 2017 GMT	Wed 4:15 PM Feb 22, 2017 GMT	4°C	55.0 Seconds
20	Sample 11	2017-02-22 15:32:00	ciEF	Wed 8:32 PM Feb 22, 2017 GMT	Wed 4:15 PM Feb 22, 2017 GMT	4°C	55.0 Seconds
21	Sample 12	2017-02-22 15:32:00	ciEF	Wed 8:32 PM Feb 22, 2017 GMT	Wed 4:15 PM Feb 22, 2017 GMT	4°C	55.0 Seconds



Measurement Summary Table – Measurement Results

LINK Record ID #	Sample Name	Main peak %Total - AVG	Main peak %Area - AVG	Main peak Resolution - AVG	Main peak Baseline - AVG	Main peak Width - AVG	Main peak pI - AVG	Main peak Position - AVG
17	Sample 8	45.50	45.50	0.69	17.50	0.11	8.37	1320
18	Sample 9	30.70	30.70	0.55	-42.90	0.08	8.37	1334
19	Sample 10	31.00	31.00	1.12	-54.70	0.08	8.37	1328
20	Sample 11	44.00	44.20	0.52	27.30	0.11	8.36	1317
21	Sample 12	24.90	24.90	1.12	-25.50	0.07	8.36	1320

MAURICE DASHBOARDS

LINK contains an extensive built-in dashboard library from LINK version 2.4.0.210401 and later. This function contains specific pre-created dashboards for all instruments and application groups.

CONTACT LUMETICS

For direct assistance, please contact Lumetics LINK™ Support:

E-mail: support@lumetics.com

Phone: 1.613.417.1839

Website: <http://lumetics.com/>

