

## Lunatic – Unchained Labs

### INTRODUCTION

The Lumetics LINK™ software platform scans network locations for new measurement data files, copies data directly to a centralized database, and provides a powerful user interface for rapid multi-measurement multi-technique data aggregation, visualization, analysis, and reporting. LINK employs a client/server-based architecture where the LINK server hardware is provided by the end user and resides on the end user’s network. The LINK client is a portable web-based application that may be placed on any computer with network connectivity to the LINK server. For successful import, the LINK webserver requires read access to the folders where user data resides.

Lunatic is a next-gen UV/Vis absorbance spectrometer that simplifies batch quantification of protein, DNA and RNA. To ensure 96 sample measurements, all that is needed is 2 µL and 10 minutes with no dilution.

### DETAILS

LINK requires XLSX workbooks for importing Lunatic data. LINK current supports both single plate and double well plate file formats. Optional PDF import as series attachment. LINK has the following acceptance criteria for importing Lunatic measurements:

- LINK expects '**Plate ID**' or '**Plate Position**' to be the first column in the table.
- LINK expects the text '**Table**' to be immediately above the table in the report.
- Raw Data columns MUST immediately follow the '**Plate type**' column.
- Raw Data columns MUST be in this format - Start with 'A', then some number, then in brackets number, then mm. E.g. **A230(10mm)**
- Columns **A280** and **A350** will not be treated as Raw data but as metadata.

The Lunatic XLSX data file example is as follows:

	A	B	C	D	E	F	G	
1	<b>LUNATIC</b>							
2	<b>Report</b>							
3	<b>Info</b>							
4	Date	2022-02-03 14:28:03						
5	Test performed by	Lumetics						
6	Instrument	400644						
7	Software version	5.1.0.185						
8	Lunatic Client version	5.1.0.213						
9	Experiment name	Test						
10	Application	A280 Protein						
11	Blanks	None (autoblink)						
12	Plate type	High Lunatic Plate						
13	Nr of Plates	1						
14		- Plate 1						
15	<b>Table</b>							
17	Plate Position	Sample name	Path	A280 Concentration (mg/ml)	E1%	Date	Time	
18	A1	TestF1 1mg/ml DS TO fill	0	0.99	16	2022-02-03	14:28:03	

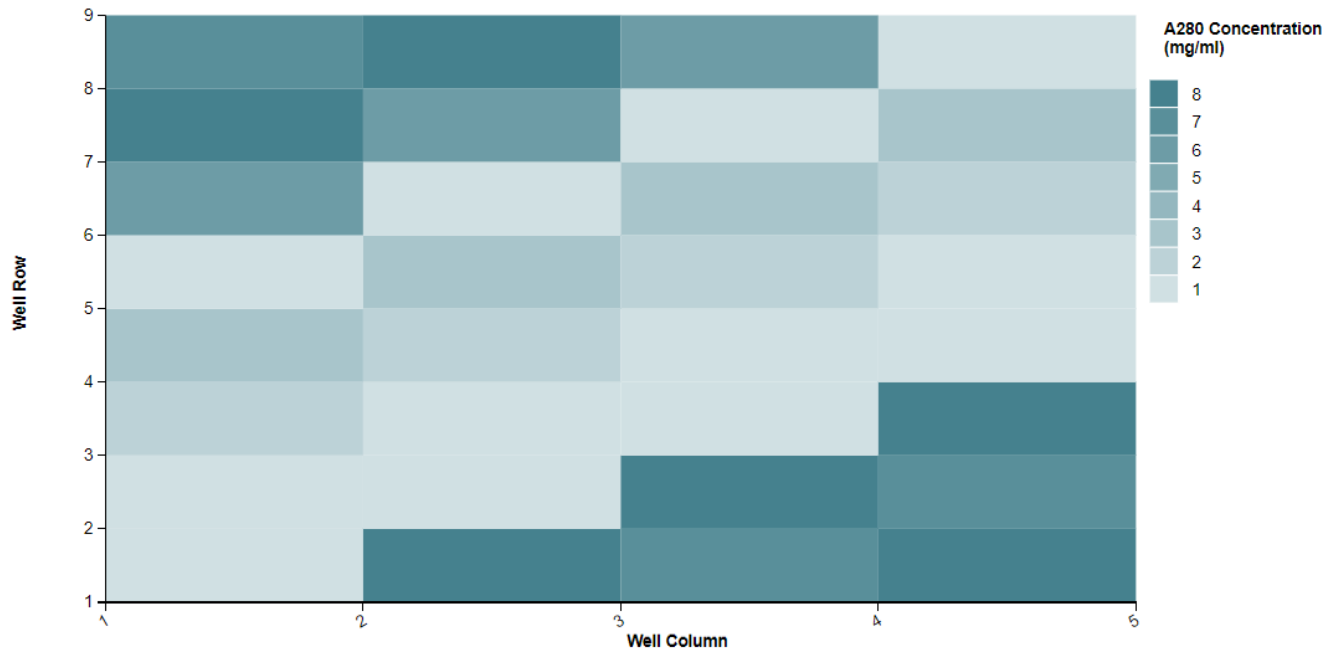
### EXAMPLES

Included below are sample dashboards from Lunatic measurement files:

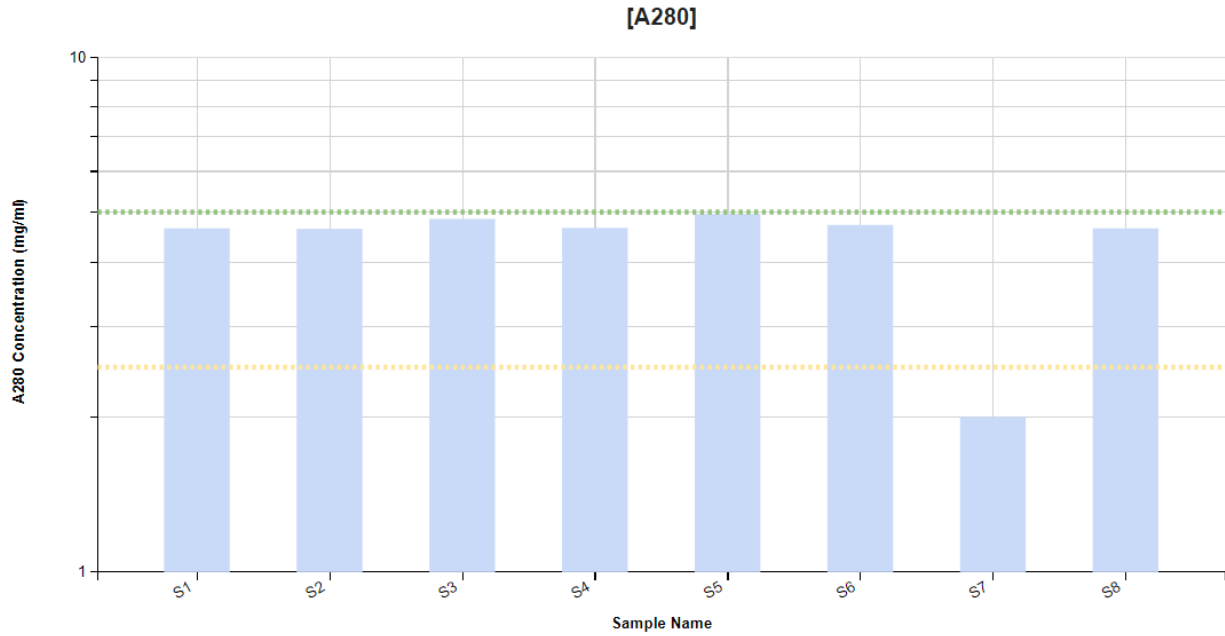
- A) 2D Histogram plotting a well plate heat map for A280 Concentration



[A280] Well Plate Heat Map - Single



B) Column Chart plotting A280 Concentration vs. Sample name with limit lines



### C) Tabular Summary

#### Measurement Summary Table – Measurement Results

Sample Name	A280 Concentration (mg/ml) - AVG	E1% - AVG	Number of Plates - AVG	Plate type	Well	Well Column - AVG	Well Row - AVG
TestF1 1mg/ml DS T0 fill	0.99	15.60	1	High Lunatic Plate	A1, B1	1	2
TestF2 10mg/ml DS T0 fill	2.50	15.60	1	High Lunatic Plate	C1, D1	1	4
Test2F1 1mg/ml DS T0 fill	3.50	15.60	1	High Lunatic Plate	E1, F1	1	6
Test2F2 10mg/ml DS T0 fill	8.00	15.60	1	High Lunatic Plate	G1, H1	1	8
TestF2 10mg/ml DS 4wk5C	4.50	15.60	1	High Lunatic Plate	A2, B2	2	2
TestF1 1mg/ml DS 4wk5C	1.50	15.60	1	High Lunatic Plate	C2, D2	2	4
Test2F2 10mg/ml DS 4wk5C	2.00	15.60	1	High Lunatic Plate	E2, F2	2	6
Test2F1 1mg/ml DS 4wk5C	7.50	15.60	1	High Lunatic Plate	G2, H2	2	8
TestF2 10mg/ml DS 4wk25C	7.50	15.60	1	High Lunatic Plate	A3, B3	3	2

#### Measurement Summary Table – Instrument Settings

Instrument Name	Sample Name	File Name	Analysis Date	Application	Blanks	Software version	Version
Lunatic	Multiple (16 Values)	2022-02-03_142803__test.xlsx	2022-02-03 14:28:03	A280 Protein (5.0.0.5)	None (autoblack)	5.1.0.185	5.1.0.185

### LUNATIC DASHBOARDS

---

LINK contains an extensive built-in dashboard library from LINK version 2.4.0.210401 and later. This function contains specific pre-created dashboards for all instruments and application groups.

### CONTACT LUMETICS

---

For direct assistance, please contact Lumetics LINK™ Support:

**E-mail:** [support@lumetics.com](mailto:support@lumetics.com)

**Phone:** 1.613.417.1839

**Website:** <http://lumetics.com/>

